

BKD 150 Click System



Universal entry options
for cables and pipes.

BKD 150 system



- Universal cable and conduit feed-through options.
- Sealing using heat-shrink tubing, either hot or cold shrink.
- Instantly gas- and watertight.
- Environmentally friendly and chemical-resistant.

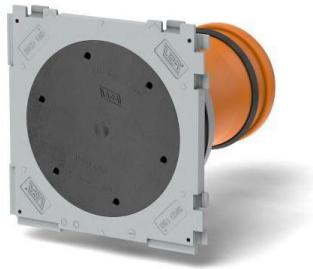
BKD 150 Cable transit

The housing is halogen-free and features a bayonet lock system. It comes standard with a pressure-resistant blind cap. Of course, the IBMO high-pressure seals also fit into the housing.

The connection between the pipe and the housing is sealed with pressure-resistant, sanded tape.

BKD 150 Single wall insert

For a single-end connection with a bayonet coupling system or high-pressure seal.



BKD 150-1Z

BKD 150 Double wall insert

For a two-way connection with a bayonet lock system or high-pressure seal.



BKD 150-2Z

BKD 150 Angular single wall insert



For installation in formwork, including steel angle brackets and mounting wedges. Reliably seal sloping penetrations at angles of 30°, 45° and 60°

Minimum wall thickness: 250 mm.

BKD 150-1Z

BKD 150 Angular double wall insert



For installation in formwork, including steel angle brackets and mounting wedges; Double-seal sloping penetrations at an angle of 30°, 45° and 60°

minimum wall thickness 250 mm.

BKD 150-2Z

BKD 150 system cover for housing and aluminum front flange

The BKD 150 system cover with pipe connection for plug-in cable glands or with optional socket connection for flexible cable glands.

BKD 150 system cover with pipe connection



Equipped with a bayonet lock.
Suitable for pipes
110 mm, 125 mm, 160 mm.
Simply slide it into the
connection.

SD-PV 110
SD-PV 125
SD-PV 160

BKD 150 system cover with socket connection



Equipped with a bayonet connection.
Connections to 110 mm, 125 mm, 140 mm, and 160 mm
pipes are made using a cold-sock or crimp-sock connection.

Sealing inserts with pipe connections

For standard housing and aluminum front flange

- Easy installation.
- No special tools required.
- Instantly waterproofs cables or pipes with the heat-shrink sleeve
- For 3 or 6 cables/pipes ranging from 7 to 56 mm

BKD 150 with IBMO pressure seal

With 3 socket connections and heat shrink tubing



HDA 150/G/1/3x60 BKD

With 3 socket connections and heat shrink tubing



HDA 150/G/1/6x40 BKD

Seals and inserts for housing and aluminum front flange



HDA150/G/1/3x60WS BKD with 3 union-ring



HDA150/G/1/6x40WS with 6 union-ring



For ribbed pipe



For Cable and Pipe

Aluminum front flange for the IBMO Click System BKD 150



For retrofitting into an existing passageway with a maximum opening size of 150 mm. Compatible with all system covers and HDAs.